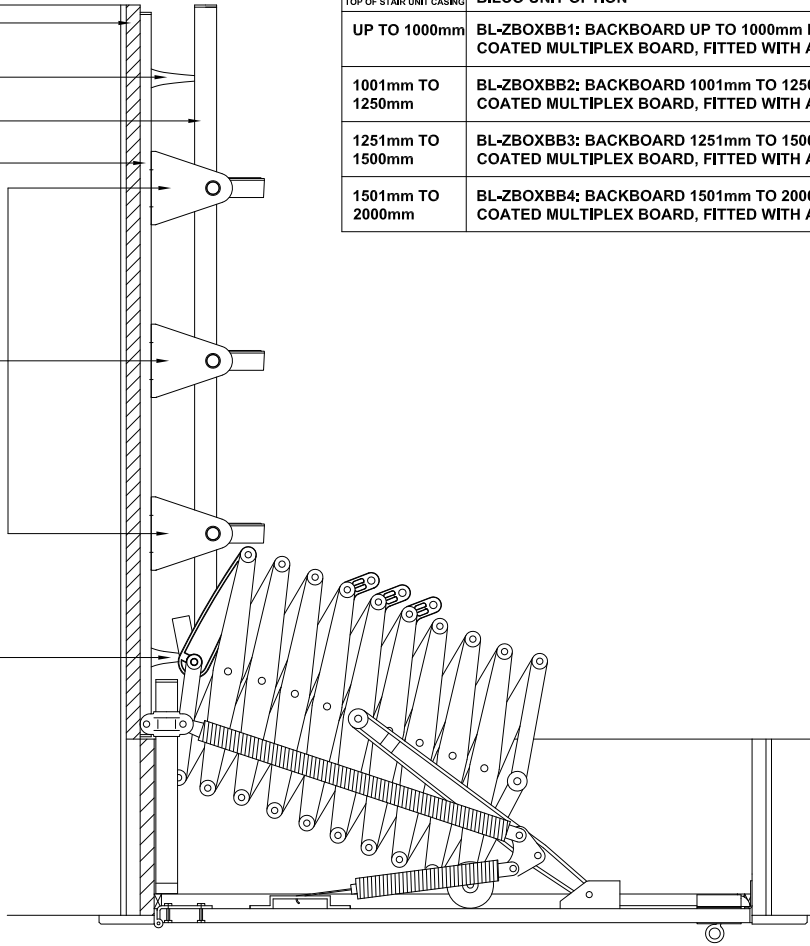
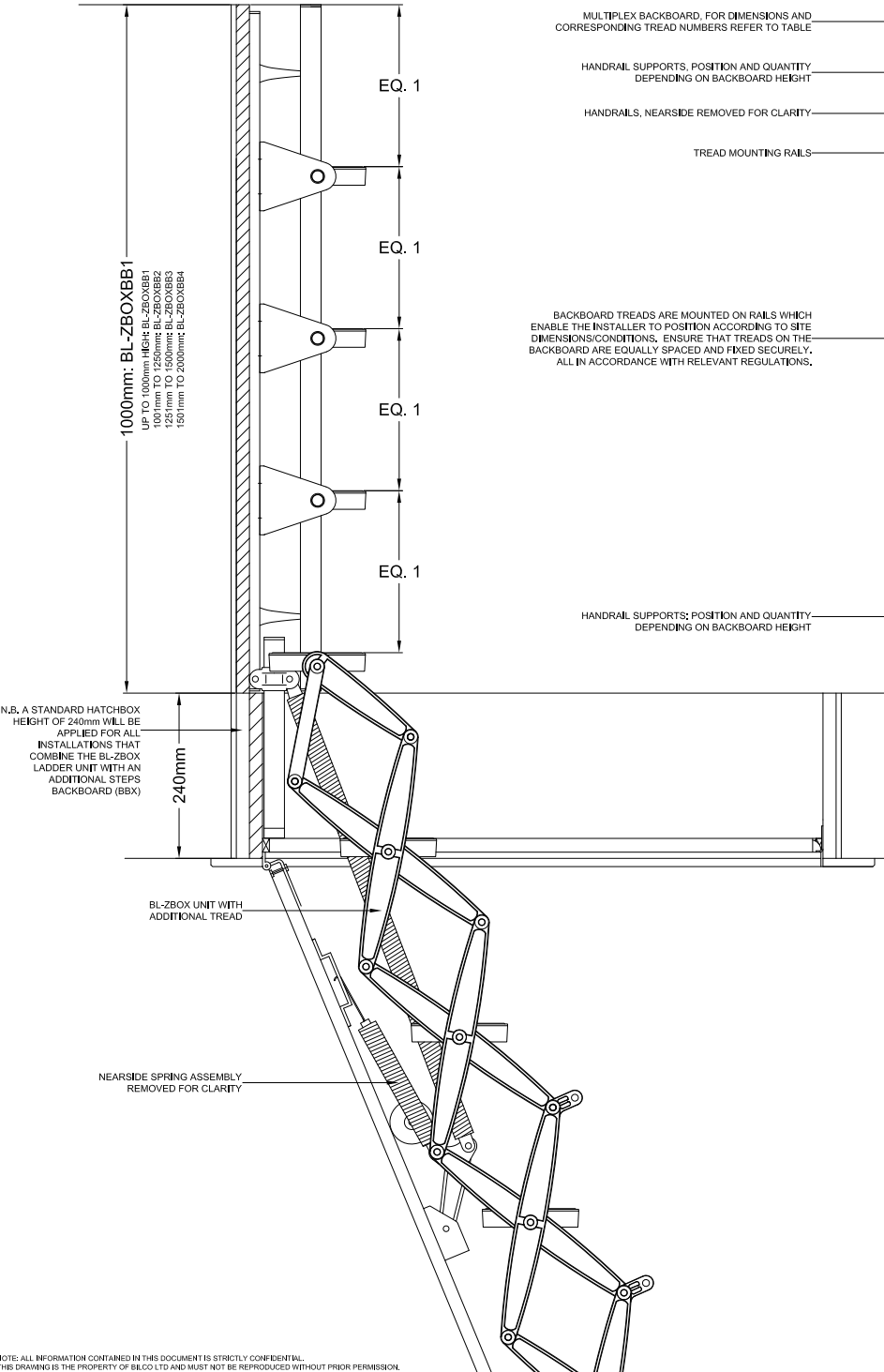



**DEPTH TO HATCH OPTIONS, INCORPORATING ADDITIONAL BACK BOARD WITH ADJUSTABLE STEPS**

DEPTH TO HATCH FROM TOP OF STAIR UNIT CASING	BILCO UNIT OPTION
UP TO 1000mm	BL-ZBOXBB1: BACKBOARD UP TO 1000mm HIGH x UP TO 1200mm WIDE, WHITE COATED MULTIPLEX BOARD, FITTED WITH ADDITIONAL TREADS (2-3), WITH GRAB RAILS
1001mm TO 1250mm	BL-ZBOXBB2: BACKBOARD 1001mm TO 1250mm HIGH x UP TO 1200mm WIDE, WHITE COATED MULTIPLEX BOARD, FITTED WITH ADDITIONAL TREADS (3-4), WITH GRAB RAILS
1251mm TO 1500mm	BL-ZBOXBB3: BACKBOARD 1251mm TO 1500mm HIGH x UP TO 1200mm WIDE, WHITE COATED MULTIPLEX BOARD, FITTED WITH ADDITIONAL TREADS (4-5), WITH GRAB RAILS
1501mm TO 2000mm	BL-ZBOXBB4: BACKBOARD 1501mm TO 2000mm HIGH x UP TO 1200mm WIDE, WHITE COATED MULTIPLEX BOARD, FITTED WITH ADDITIONAL TREADS (5-6), WITH GRAB RAILS



NOTE: ALL INFORMATION CONTAINED IN THIS DOCUMENT IS STRICTLY CONFIDENTIAL. THIS DRAWING IS THE PROPERTY OF BILCO LTD AND MUST NOT BE REPRODUCED WITHOUT PRIOR PERMISSION.



Bilco UK Ltd, Pavilion 7  
Fornham Business Court  
Hall Farm, Fornham St. Martin  
Bury St. Edmunds, Suffolk, IP31 1SL

Issue status		Drawing Title:		Scale:
		BL-ZBOXBB1: UP TO 1000mm HIGH		1:1
		BL-ZBOXBB2: 1001mm TO 1250mm		Sheet
		BL-ZBOXBB3: 1251mm TO 1500mm		PLOT AT
		BL-ZBOXBB4: 1501mm TO 2000mm		A4 1/5
				Issue:
All dimensions in mm				
First Issue	05/2010	J.P.	© All rights reserved	Do not scale drawings
Issue Description	Date	Name	Filename: BL-ZBOXBB1-BB4.DWG	Project: Standard Issue